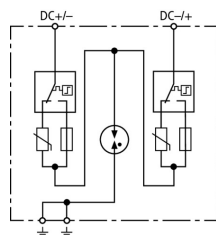


DCB YPV SCI 1000 (900 061)

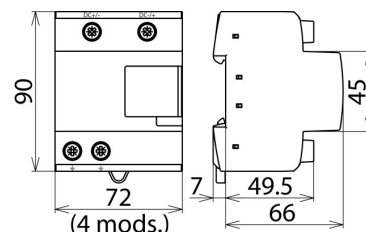
- Prewired type 1 and type 2 combined lightning current and surge arrester for use in photovoltaic generator circuits
- Combined disconnection and short-circuiting device with safe electrical isolation prevents fire damage caused by d.c. switching arcs (patented SCI principle)
- Space-saving enclosure with a width of four modules



Figure without obligation



Basic circuit diagram DCB YPV SCI 1000



Dimension drawing DCB YPV SCI 1000

Combined lightning current and surge arrester for use in photovoltaic power supply systems up to 1000 V d.c.

| Type | DCB YPV SCI 1000 |
|--|---|
| Part No. | 900 061 |
| SPD according to EN 50539-11 | type 1 + type 2 |
| Max. PV voltage [DC+ -> DC-] (U_{CPV}) | ≤ 1000 V |
| Max. PV voltage [DC+/DC- -> PE] (U_{CPV}) | ≤ 725 V |
| Short-circuit current rating (I_{SCPV}) | 1000 A |
| Nominal discharge current (8/20 μ s) (I_n) | 15 kA |
| Total discharge current (8/20 μ s) [DC+/DC- -> PE] (I_{total}) | 30 kA |
| Total discharge current (10/350 μ s) [DC+/DC- -> PE] (I_{total}) | 12.5 kA |
| Specific energy [DC+/DC- -> PE] (I) | 39.06 kJ/ohms |
| Lightning impulse current (10/350 μ s) [DC+ -> PE/DC- -> PE] (I_{imp}) | 6.25 kA |
| Specific energy [DC+ -> PE/DC- -> PE] (W/R) | 9.76 kJ/ohms |
| Voltage protection level [(DC+/DC-) -> PE] (U_P) | 2.5 kV |
| Voltage protection level [DC+ -> DC-] (U_P) | 4.75 kV |
| Response time (t_A) | ≤ 25 ns |
| Operating temperature range (T_U) | -40 °C ... +80 °C |
| Operating state / fault indication | green / red |
| Number of ports | 1 |
| Cross-sectional area (min.) | 1.5 mm ² solid / flexible |
| Cross-sectional area (max.) | 35 mm ² stranded / 25 mm ² flexible |
| For mounting on | 35 mm DIN rails acc. to EN 60715 |
| Enclosure material | thermoplastic, red, UL 94 V-0 |
| Place of installation | indoor installation |
| Degree of protection | IP 20 |
| Dimensions | 4 module(s), DIN 43880 |
| Approvals | KEMA, UL |
| Weight | 433 g |
| Customs tariff number | 85363030 |
| GTIN | 4013364153721 |
| PU | 1 pc(s) |

We reserve the right to introduce changes in performance, configuration and technology, dimensions, weights and materials in the course of technical progress. The figures are shown without obligation.