

## USD 15 V11 S B (924 051)

- Plug-in surge arrester with two-stage protective circuit
- Protective circuit decoupled with regard to the terminal equipment
- For installation in conformity with the lightning protection zone concept at the boundaries from  $0_b -2$  and higher

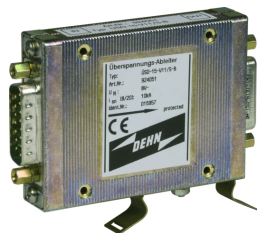
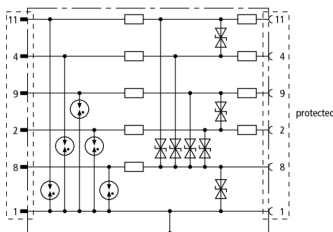
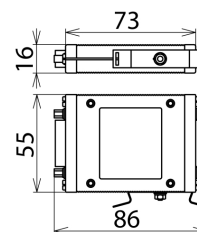


Figure without obligation



Basic circuit diagram USD 15 V11 S B



Dimension drawing USD 15 V11 S B

Energy-coordinated two-stage arrester for RS422, V.11 interfaces with diode protective circuit at the input. 15-pin SUB-D version.

Type	USD 15 V11 S B
Part No.	924 051
SPD class	TYPE 2 PJ
Nominal voltage ( $U_n$ )	8 V
Max. continuous operating voltage (d.c.) ( $U_c$ )	8.5 V
C2 Nominal discharge current (8/20 $\mu$ s) line-PG ( $I_n$ )	2.5 kA
C2 Nominal discharge current (8/20 $\mu$ s) SG-PG ( $I_n$ )	7.5 kA
Voltage protection level line-line for $I_n$ C2 ( $U_p$ )	$\leq 55$ V
Voltage protection level line-SG for $I_n$ C2 ( $U_p$ )	$\leq 30$ V
Voltage protection level SG-PG for $I_n$ C2 ( $U_p$ )	$\leq 35$ V
Voltage protection level line-line / line-SG at 1 kV/ $\mu$ s C3 ( $U_p$ )	$\leq 15$ V
Voltage protection level SG-PG at 1 kV/ $\mu$ s C3 ( $U_p$ )	$\leq 15$ V
Series resistance per line	37 ohms
Operating temperature range ( $T_u$ )	-40 °C ... +80 °C
For mounting on	SUB-D or 35 mm DIN rails acc. to EN 60715
Connection (input / output)	SUB-D 15 plug / SUB-D 15 socket
Pinning	line: 2/9/4/11, SG: 8, PG: 1
Earthing via	earthing screw or DIN rail
Test standards	IEC 61643-21 / EN 61643-21
Approvals	EAC
Weight	147 g
Customs tariff number	85363010
GTIN	4013364033986
PU	1 pc(s)

We reserve the right to introduce changes in performance, configuration and technology, dimensions, weights and materials in the course of technical progress. The figures are shown without obligation.