

USD 9 V24 S B (924 061)

- Plug-in surge arrester with two-stage protective circuit
- For installation in conformity with the lightning protection zone concept at the boundaries from $0_B - 2$ and higher

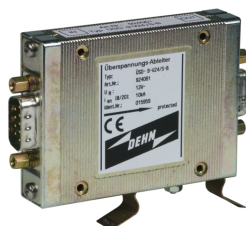
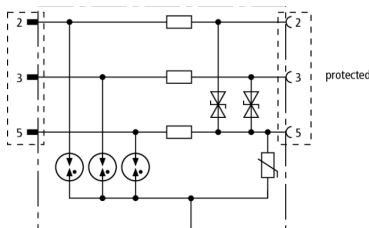
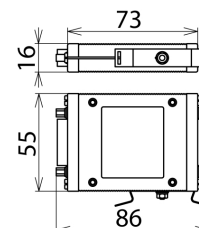


Figure without obligation



Basic circuit diagram USD 9 V24 B



Dimension drawing USD 9 V24 B

Energy-coordinated two-stage arrester for V.24 interfaces. 9-pin SUB-D version.

Type	USD 9 V24 S B
Part No.	924 061
SPD class	TYPE 2 P1
Nominal voltage (U_N)	12 V
Max. continuous operating voltage (d.c.) (U_c)	12.5 V
C2 Nominal discharge current (8/20 μ s) line-PG (I_n)	2.5 kA
C2 Nominal discharge current (8/20 μ s) SG-PG (I_n)	7.5 kA
Voltage protection level line-SG for I_n C2 (U_p)	≤ 22 V
Voltage protection level SG-PG for I_n C2 (U_p)	≤ 330 V
Voltage protection level line-SG at 1 kV/ μ s C3 (U_p)	≤ 18 V
Voltage protection level SG-PG at 1 kV/ μ s C3 (U_p)	≤ 220 V
Series resistance per line	15 ohms
Operating temperature range (T_U)	-40 °C ... +80 °C
For mounting on	SUB-D or 35 mm DIN rails acc. to EN 60715
Connection (input / output)	SUB-D 9 plug / SUB-D 9 socket
Pinning	line: 2/3, SG: 5
Earthing via	earthing screw or DIN rail
Test standards	IEC 61643-21 / EN 61643-21
Approvals	EAC
Weight	141 g
Customs tariff number	85363010
GTIN	4013364034006
PU	1 pc(s)

We reserve the right to introduce changes in performance, configuration and technology, dimensions, weights and materials in the course of technical progress. The figures are shown without obligation.